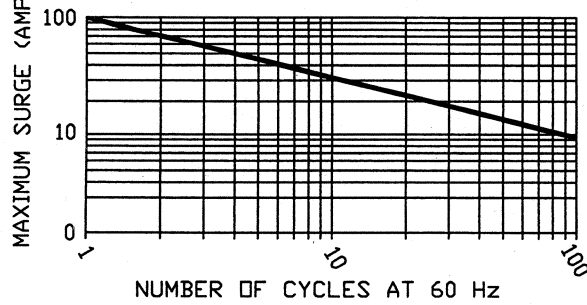


REVISIONS

ISSUE	DESCRIPTION	DATE	APPROVAL
A	RELEASED	4/2/2013	YK <i>[Signature]</i>

NON-REPETITIVE SURGE CURRENT

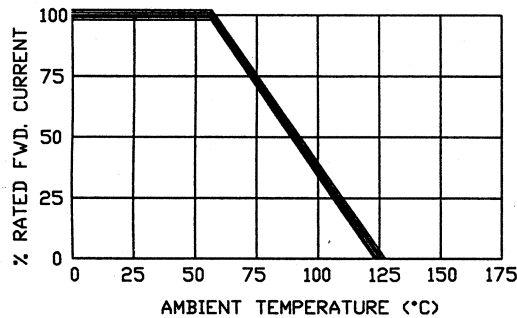
SINE WAVE INPUT @ $T_a=25^\circ\text{C}$



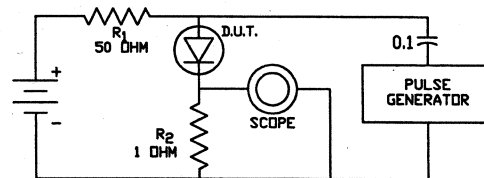
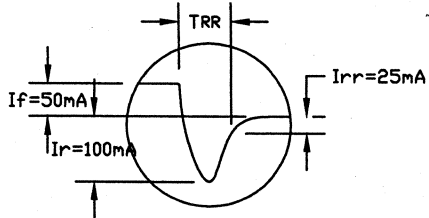
ELECTRICAL SPECIFICATIONS

PEAK REVERSE OPERATING VOLTAGE, $V_{r(oper)}$	8 KV
AVERAGE RECTIFIED FORWARD CURRENT @ 55°C , I_o	500 mA
MAX. SURGE CURRENT (1/2 CYCLE, 60 Hz), I_{frn}	100 A
MAX. SURGE CURRENT (10 CYCLE, 60 Hz), I_{frn}	25 A
MAX. FORWARD VOLTAGE DROP @ 300mA, V_f	12 V MAX.
MAX. DC REVERSE CURRENT @ 8KV & 25°C , I_r	0.5 μA
MAX REVERSE RECOVERY, T_{RR}	75 nSEC
OPERATING TEMPERATURE RANGE	-55 TO +125 $^\circ\text{C}$
STORAGE TEMPERATURE RANGE	-55 TO +150 $^\circ\text{C}$

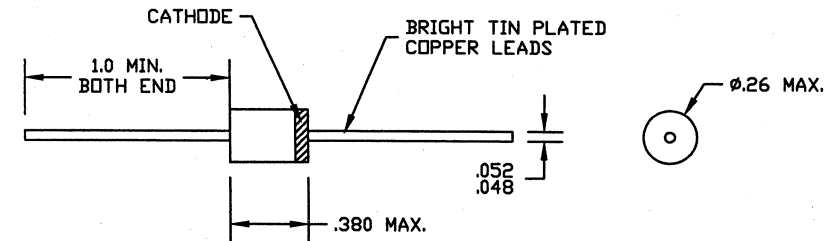
CURRENT DERATING

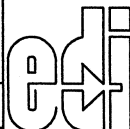


TYPICAL REVERSE RECOVERY WAVEFORM



R_1, R_2 NON-INDUCTIVE RESISTORS
 PULSE GENERATOR - HP 214 OR EQUIVALENT
 1 KC REP. RATE - 10 μSEC . PULSE WIDTH
 ADJUST PULSE AMPLITUDE FOR PEAK I_r



MATERIAL			FINISH		
UNLESS OTHERWISE SPECIFIED DIMENSIONS ARE IN INCHES DIMENSIONAL TOLERANCES			TITLE 8KV FAST RECOVERY HIGH CURRENT RECTIFIER		
FRAC.	DEC.	ANG.	DRAWN YK <i>[Signature]</i>	DATE 4/2/2013	 ELECTRONIC DEVICES, INC. YONKERS, NEW YORK
$\pm 1/64$	$\pm .005$	$\pm 30'$	CHECKED	DATE	
SCALE	NO. REQ'D	MFG. APP.	DATE	SIZE	DRAWING NUMBER
NEXT ASSY.		Q.C. APP.	DATE	A	ED3085
		ENG. APP.	DATE		A

THIS DRAWING IS TO BE USED AS A REFERENCE TO SERVICES ON WORK PERFORMED BY OR FOR ELECTRONIC DEVICES INC. AND IS FURNISHED SUBJECT TO THE CONDITION THAT IT SHALL NOT BE REPRODUCED, COPIED, LOANED, OR OTHERWISE SIMILARLY DISPOSED OF DIRECTLY OR INDIRECTLY, AND IS NOT TO BE DISCLOSED TO THIRD PARTIES WITHOUT FIRST OBTAINING ELECTRONIC DEVICES INC. SPECIFIC WRITTEN PERMISSION.